

ENGINEERING  
TOMORROW



Service Guide

# Database Loading AK-SM 880

ADAP-KOOL® Refrigeration Control System



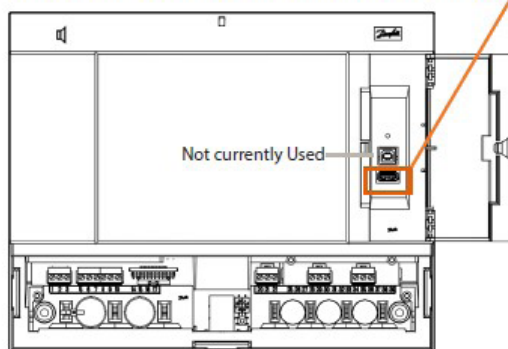
1. Copy program onto a standard USB stick.
2. Press 'Gear'/Configuration button at top right of keypad so you are prompted to login. Factory password is 12345, then press OK.



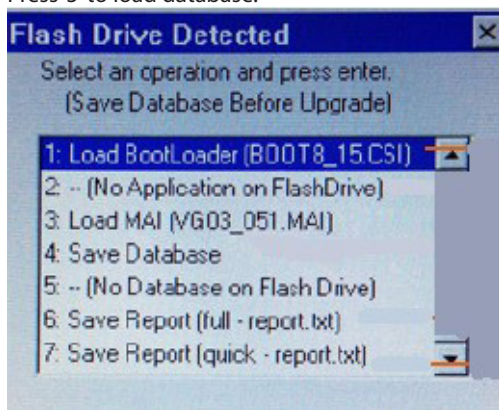
3. Open door to right of display, plug USB stick into USB port.

### USB Access door

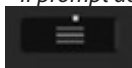
Active USB Flash drive (use for load/save database and AK-SM software) User Authorization required'



4. Once USB is connected, pop-up window below should appear. Press '5' to load database.



*\*If prompt does not appear, press menu button on keypad*



*and select '7' for Flash Drive*

5. Database will automatically load and controller reset. After reset, USB stick can be removed.