



REFRIGERATION AND
AIR CONDITIONING

INSTRUCTIONS

EKA 163A / 164A



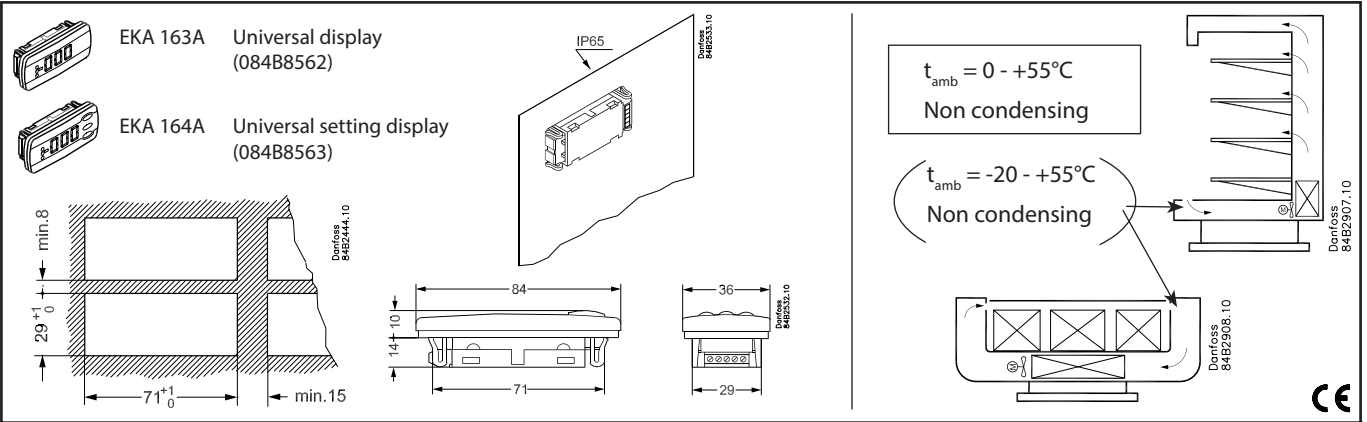
084R9970



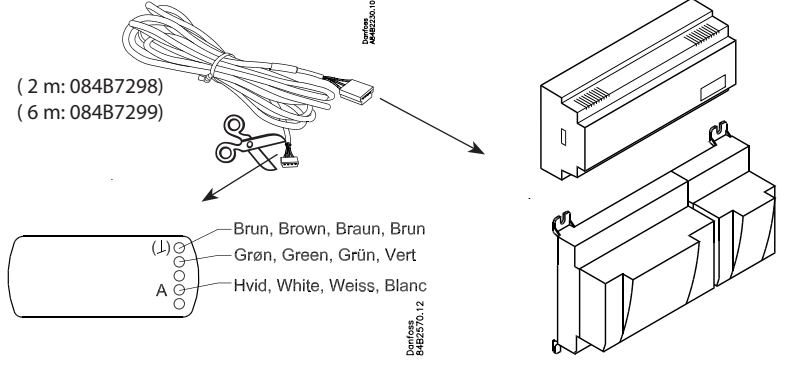
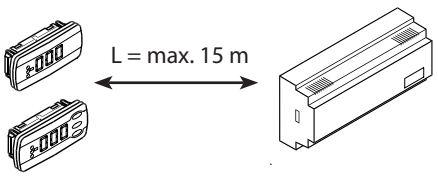
R18KB700

084R9970

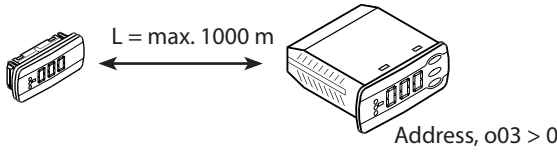
084R9970



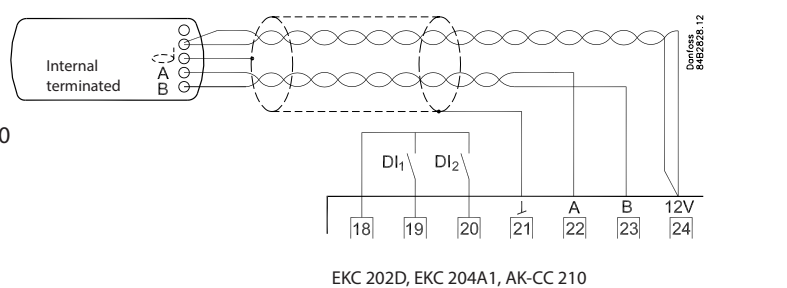
EKA 163A /
EKA 164A → EKC 4xx / EKC 5xx / AK..



EKA 163A → EKC 202D / 204A1, AK-CC 210 / 260

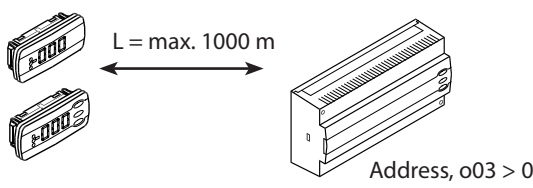


Data communication: See literature RC8AC

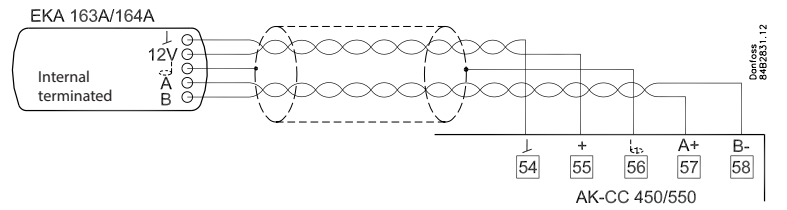


EKC 202D, EKC 204A1, AK-CC 210

EKA 163A / 164A → AK-CC 450 / 550

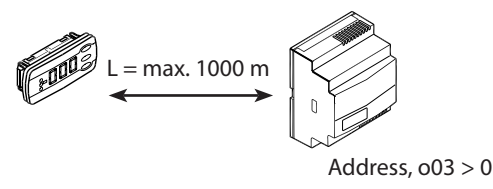


Data communication: See literature RC8AC

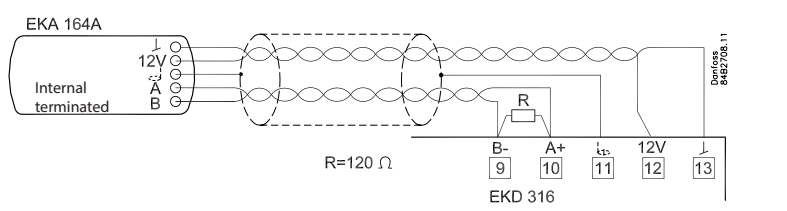


AK-CC 450/550

EKA 164A → EKD 316



Data communication: See literature RC8AC



R=120 Ω

The Product contains electrical components
And may not be disposed together with domestic waste.
Equipment must be separate collected with Electrical and Elec-
tronic waste. According to Local and currently valid legislation.