

# Generator F100M

## Cylinder

- Cylinder external insulation (polystyrene sheets).
- Cylinder external insulation liner (PVC sheet).
- Double wall stainless steel cylinder (machined and chromium plated).

## Base

- Connection pipe for water distribution.
- Filter on water spray connection pipe.
- Float valve for water supply.
- Generator base lid.
- Over flow + draining connection.
- Stainless steel base without insulation.
- Vertical water pump.

## Revolving part

- Central shaft (zinc plated, painted steel) revolving between two ball bearings (zinc plated, painted steel).
- Helical reamer (stainless steel).
- Reamer adjuster with bolts and nuts.
- Rubber wiper to limit the sprinkling area.
- Vertical deflector.
- Water spray (PVC).

## Drive for revolving part

- Gear reducer, motor and belt.
- Torque limiter device with manual reset.

## Refrigerating part

- External bottle liner (PVC sheet).
- Thermostatic expansion valve.
- Vertical bottle external insulation (polystyrene sheets).
- Vertical bottle with heat exchanger.

## Miscellaneous

- Vertical salt dosing pipe requiring sodium chloride tablets.

## Options

- *Electrical control panel.*
- *Ice level detector.*
- *Salt dosing pump.*



**FRIGOFRANCE SA. Div. GENEGLACE**

Place de la Bastille - Les Couëts  
44344 Bouguenais cedex- France

Tél. +33-(0)2-40-32-06-06 Fax +33-(0)2-40-65-04-88

**Scope of our supply**

**Generator F100M**

Series 01/01/2001 **SEMI-INDUSTRIAL ON-BOARD**

Edition date 01/08/01

**GTL.001A**

# Generator F100M

## Operating conditions

Refrigerant	Refrigerant charge (approx.)	Reamer speed	Water T°	Daily ice production	Ice thickness	Evap. T°	Refrigerating capacity	Max cond. T°
	kg	tr/h	°C	kg/24h	mm	°C	kW	°C
R404a	13,0	87	20	2400	1,9	-23,0	12,7	45
R22	13,0	87	20	2500	2,0	-25,0	13,3	50

## Refrigerant inlet

-Thermostatic expansion valve.

## Electrical connections

Qty.	Description	Power supply	Nominal power	Amperage
1 x	Reamer motor	400V/3/50Hz	1 x 180 W	1 x 0,8 A
1 x	Pump	230V/1/50Hz	1 x 125 W	1 x 0,58 A

## Overall dimensions

Length	900 mm
Width	700 mm
Height	1450 mm
Net weight	220 kg

## Options

- Electrical control panel.
- Ice level detector.
- Salt dosing pump.

-----NOTE: This on-board generator makes flake ice only with fresh water.



**FRIGOFRANCE SA. Div. GENEGLACE**

Place de la Bastille - Les Couëts  
44344 Bouguenais cedex- France

Tél. +33-(0)2-40-32-06-06 Fax +33-(0)2-40-65-04-88

**Specifications**

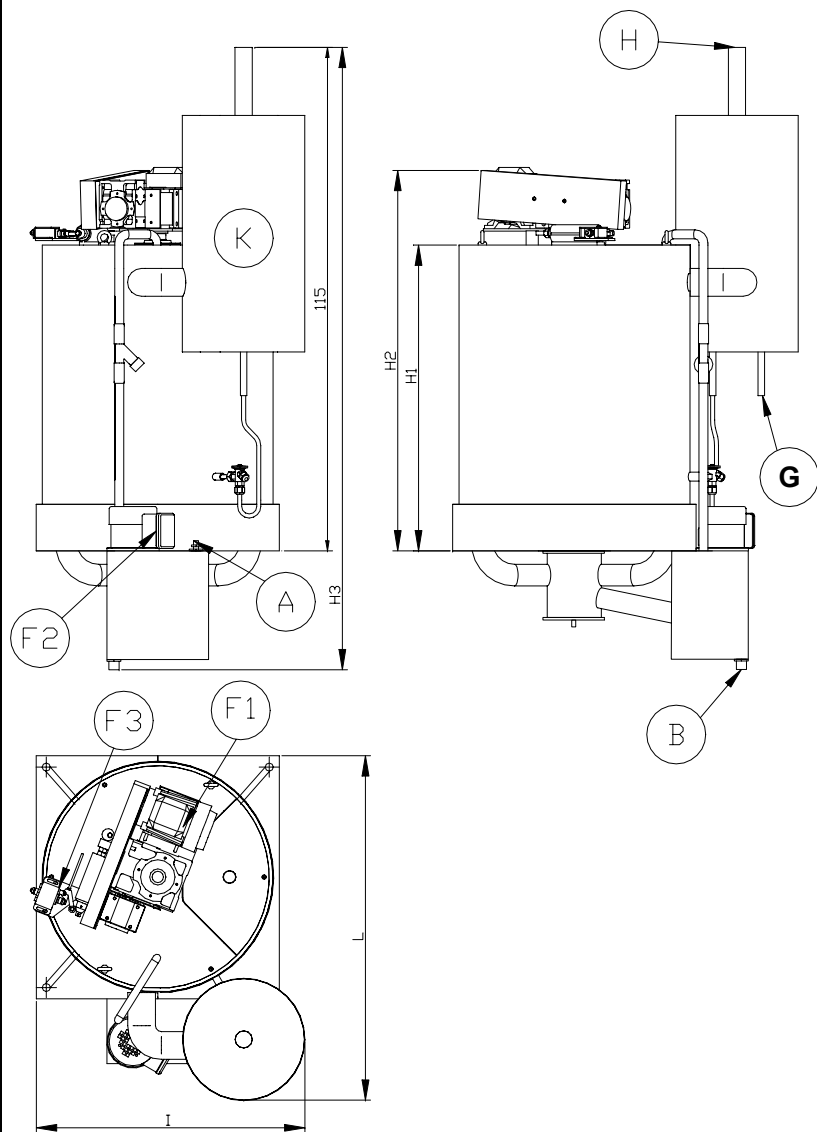
**Generator F100M**

Series 01/01/2001 SEMI-INDUSTRIAL ON-BOARD

Edition date 01/08/01

**GTD.001A**

# Generator F100M



Minimal clearance for disassembly: See Installation and handling section

Dimensions	
H1	730
H2	900
H3	1450
I	700
L	900

Dimensions in mm



**FRIGOFRANCE SA. Div. GENEGLACE**

Place de la Bastille - Les Couëts  
44344 Bouguenais cedex- France

Tél. +33-(0)2-40-32-06-06 Fax +33-(0)2-40-65-04-88

FRIGOFRANCE may change this document without prior notice.

## Hydraulic connections

Max. water flow 120 l/h Water pressure 2,0 - 4,0 bar

Item	Description	Qty.	Connections		
			Dimensions	Type	Material
A	Generator water supply	1	10/12 mm	Plain Ends	Brass
B	Overflow + water drain	1	22/25 mm	Plain Ends	P.V.C.

## Refrigerating connections

Maximum working pressure 13,0 bar

Item	Description	Qty.	Connections		
			Dimensions	Type	Material
G	Liquid inlet	1	5/8"	Plain Ends	Copper
H	Suction	1	42,4 x 3,25 mm	Plain Ends	Steel

## Electrical connections

Item	Description	Qty.	Power supply	Nominal power (W)	Nominal amperage
F1	Reamer motor	1	400V/3/50Hz	1 x 180 W	1 x 0,8 A
F2	Pump	1	230V/1/50Hz	1 x 125 W	1 x 0,58 A
F3	Torque limiter switch	1			

## Other specifications

Dimensions				Item		
Dimensions	Overall	Open crate	Full crate	Item	Description	Qty.
Length	mm	900	1000	K	Vertical bottle with heat exchanger	1
Width	mm	700	900			
Height	mm	1450	1850			
Volume	m3	0,91	1,67			
Net weight	kg	220,00	220,00			
Gross weight	kg	220,00	320,00			

Dimensions and connections

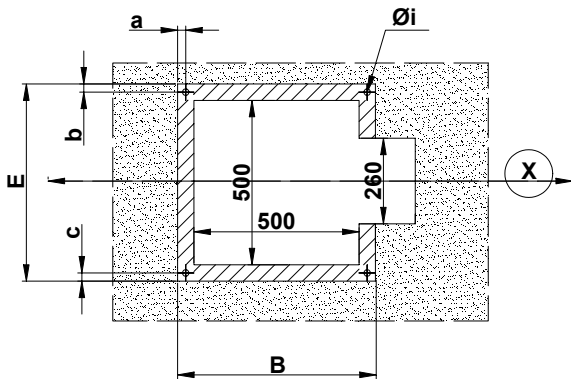
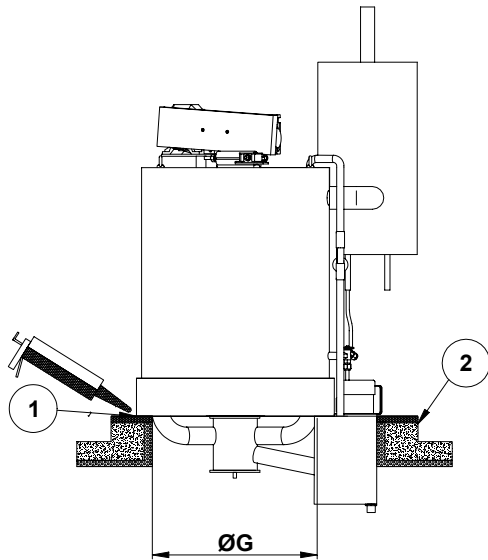
GTE.001A

**Generator F100M**

Series 01/01/2001 SEMI-INDUSTRIAL ON-BOARD

Edition date 01/08/01

# Generator F100M

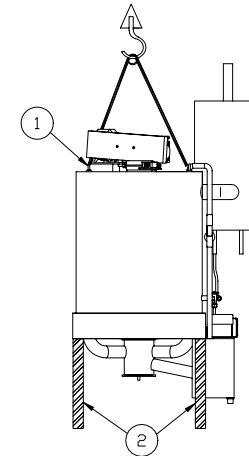


- 1 Tightness seal around the boring
- 2 Raising of the floor to avoid accidental water leaks in the storage
- D1 Minimum clearance for reducer removal
- D2 Minimum clearance for reamer removal
- G Ice chute
- X Generator axis always parallel with the longitudinal axis of the boat

## Handling

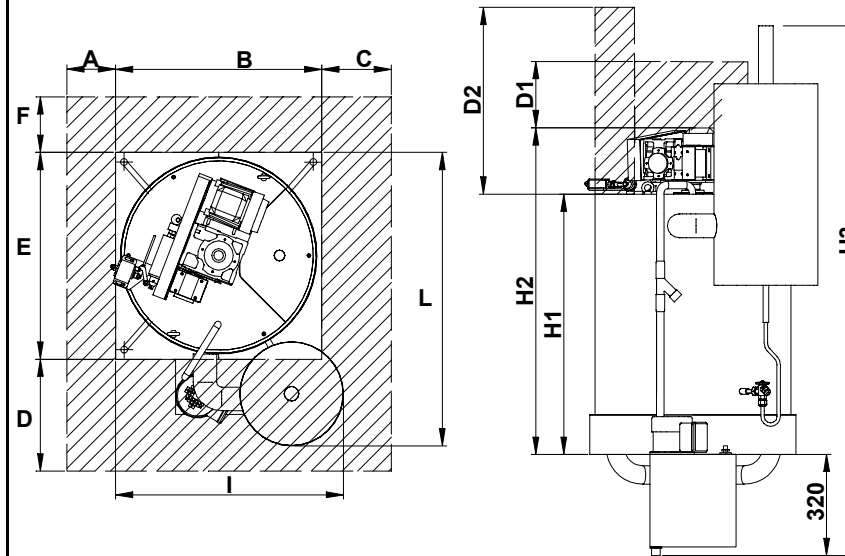
(Net weight 220 kg)

- 1 Two lifting eyes
- 2 Four feet for handling



## Minimum clearance for service

We advise to foresee enough space around the ice maker for its inspection and maintenance.



A	200	F	200	a	25
B	600	G	500	b	25
C	200	H1	730	c	25
D	900	H2	900	i	10
D1	300	H3	1450		
D2	680	I	700		
E	600	L	900		

Dimensions in mm



FRIGOFRANCE SA. Div. GENEGLACE

Place de la Bastille - Les Couëts  
44344 Bouguenais cedex- France

Tél. +33-(0)2-40-32-06-06 Fax +33-(0)2-40-65-04-88

FRIGOFRANCE may change this document without prior notice.

Installation and handling

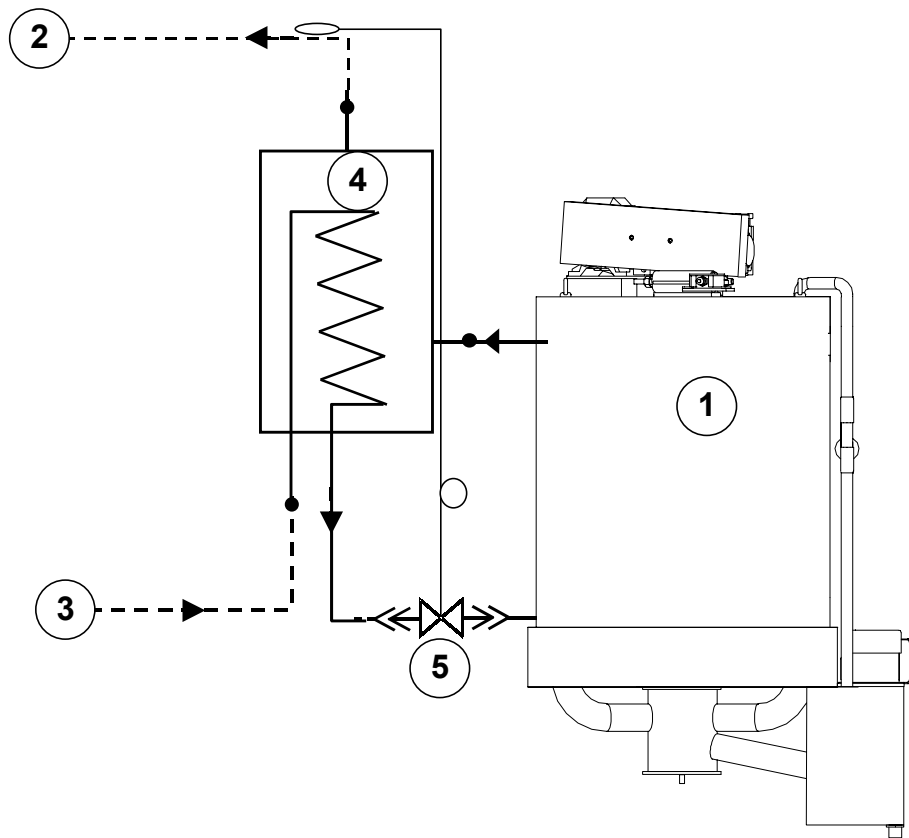
GTI.001A

Generator F100M

Series 01/01/2001 SEMI-INDUSTRIAL ON-BOARD

Edition date 14/01/2002

# Generator F100M



- |   |
|---|
| 1 / Generator                           |
| 2 / Suction                             |
| 3 / HP liquid inlet                     |
| 4 / Vertical bottle with heat exchanger |
| 5 / Thermostatic expansion valve        |

	Refrigerating connection made
	To be performed on site
	Weld
	Flare connection
	Screw connection
	Flange connection



**FRIGOFRANCE SA. Div. GENEGLACE**

Place de la Bastille - Les Couëts  
44344 Bouguenais cedex- France

Tél. +33-(0)2-40-32-06-06 Fax +33-(0)2-40-65-04-88

**Refrigerating sketch**

**Generator F100M**

Series 01/01/2001 SEMI-INDUSTRIAL ON-BOARD

Edition date 01/08/01

**GTF.001A**